

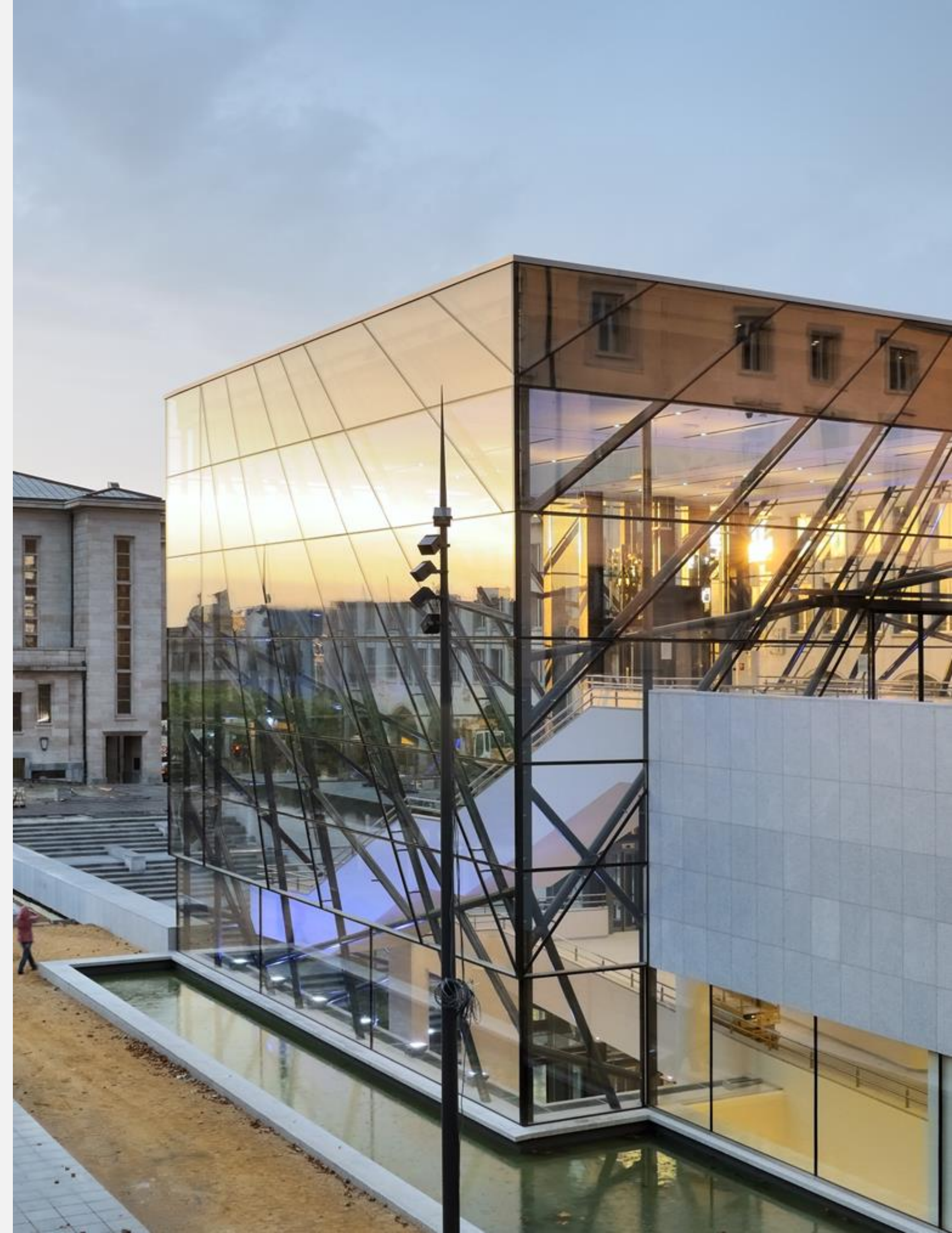
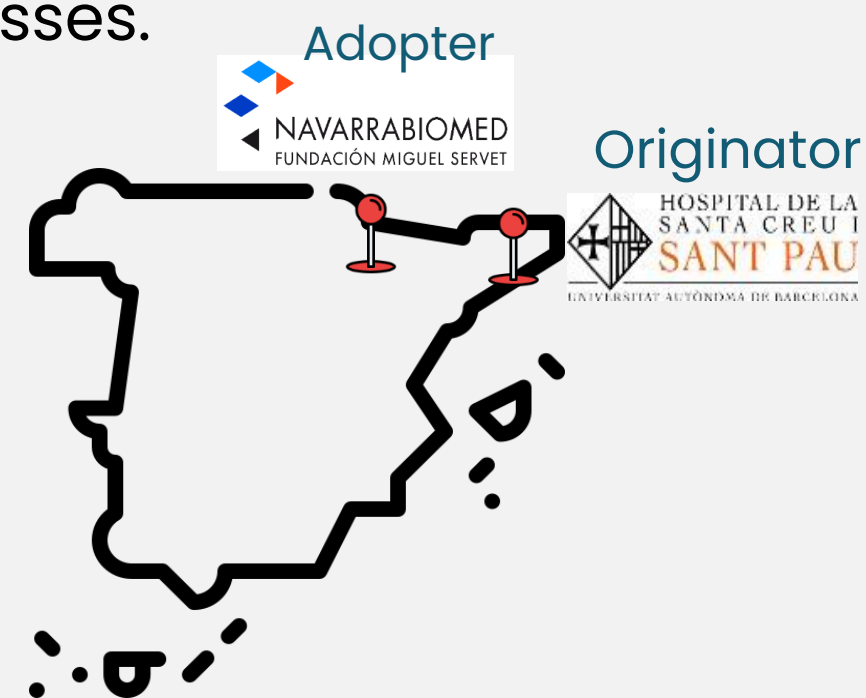


Navarrabiomed

Example of awarded Twinning

• **Twinning proposal**

- Fundación Miguel Servet - Navarrabiomed (FMS) as adopter for the Navarra Health System (Servicio Navarro de Salud-Osasunbidea, SNS-O).
- FMS is the scientific and technical support body of the Health Administration of Navarra for the generation and dissemination of knowledge, promotion, impulse and development of research and innovation in health and collaboration in training activities.
- Fundació Privada Hospital de la Santa Creu i Sant Pau (HSP) as originator; With extensive experience in Public Procurement of Innovation (PPI) processes.

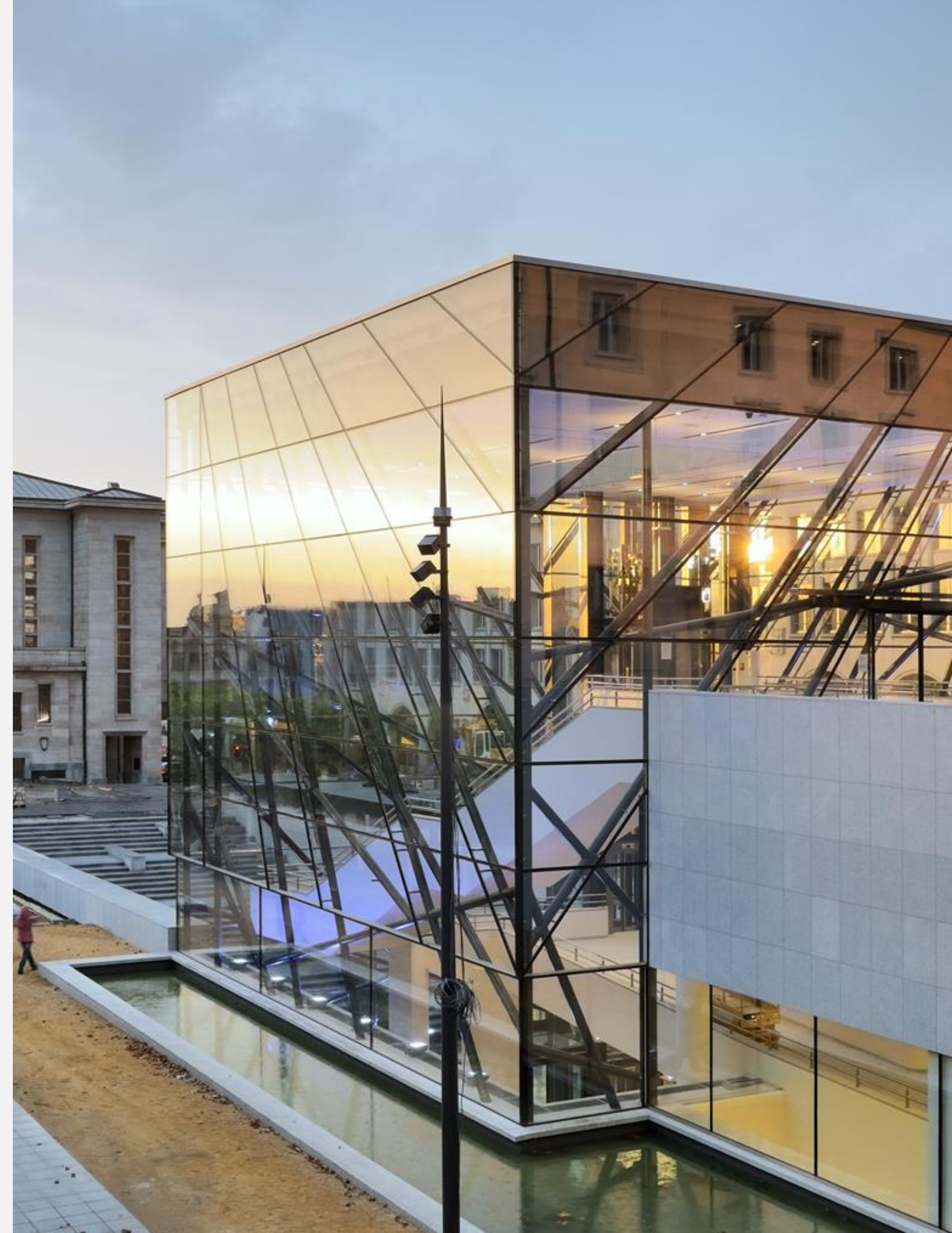




Navarrabiomed

Example of awarded Twinning

- **The twinning is based on the FMS being able to acquire knowledge from the HSP and initiate an PPI process with its help.**
 - Team building, challenge definition, relevant aspects of PPI, bidding, implementation, etc.
- The SNS-O has no experience so far in participating in PPI processes. It proceeds with classic tenders to purchase equipment, products, etc.
- **The objective is to make an effective knowledge transfer among the partners.**
 - Both entities share the same problems, barriers and challenges, so the solutions in this field or PPI can be fluently adopted so the FMS could implement the learnings about PPI in the SNS-O.
 - The scope of the project ranges from the initial analysis of the situation to the feasibility analysis of the implementation of PPI in the system.





Sant Pau Hospital

Healthcare re-organization through PPI

Pioneers in the successful implementation of PPI and PCP projects since 2015...



EU Funded
PCP and PPI
Projects:

STOP&GO PPI

Innovative ICT-based telecare services for seniors suffering from multiple conditions such as heart failure, diabetes, etc.

RITMOCORE PPI

PPI initiative addressing the evolution in the treatment of elderly patients with arrhythmias using or in need of a pacemaker, moving from a hospital centred to a patient.

TIQUE PCP

Innovative care services to deliver quick responses to complex patients with advanced heart failure through integrated care.

BRONCHIAL NAVIGATOR

Early diagnosis of lung cancer for patients with undiagnosed pulmonary nodules through a minimally invasive diagnose technique.

DRUG CODE

Comprehensive approach to secondary prevention of health problems related to medicines.

Other





What we proposed

Category	Topic	Scope
Explore and initiate	Identification of PPI processes	Identify health processes: high patient relevance, high cost high technological intensity, high automation requirements, relevant needs for remote patient monitoring
	PPI considerations for implementation	Issues regarding the implementation in healthcare systems: services procurement, healthcare value centered on the patient.
Organizational capacity	Organizational engagement	Identification of the multidisciplinary team
	Training workshop	Training workshop for the PPI team: what PPI is, and what is expected of them during the process
Organizational stakeholder mobilisation	Stakeholder mapping	Identifying key stakeholders and understanding their relationships with each other. This will help to develop an informed strategy for managing stakeholders throughout the PPI process
	Strategic alignment	Planning and implementing practices to ensure an organization's strategies support the PPI objectives
	Budget perspectives	Estimation of the budget needed to meet PPI objectives
	Business case	
Preparation of business case report: market analysis, development of the business case including relevant calculations (NPV, ROI), report elaboration, interaction with public buyers and contractors for verifying the relevant information		
In case, elaboration of the patient journey map in order to design the innovative services to be acquired and their differences with the current ones		



What we proposed

Category	Topic	Scope
Explore and initiate	Identification of PPI processes	Identify health processes: high patient relevance, high cost high technological intensity, high automation requirements, relevant needs for remote patient monitoring
	PPI considerations for implementation	Issues regarding the implementation in healthcare systems: services procurement, healthcare value centered on the patient.
Organizational capacity	Organizational engagement	Identification of the multidisciplinary team
	Training workshop	Training workshop for the PPI team: what PPI is, and what is expected of them during the process
Organizational stakeholder mobilisation	Stakeholder mapping	Identifying key stakeholders and understanding their relationships with each other. This will help to develop an informed strategy for managing stakeholders throughout the PPI process
	Strategic alignment	Planning and implementing practices to ensure an organization's strategies support the PPI objectives
	Budget perspectives	Estimation of the budget needed to meet PPI objectives
	Business case	<p>Description of how the PPI proposal will be adopted by the institution, and its impact.</p> <p>Preparation of business case report: market analysis, development of the business case including relevant calculations (NPV, ROI), report elaboration, interaction with public buyers and contractors for verifying the relevant information</p> <p>In case, elaboration of the patient journey map in order to design the innovative services to be acquired and their differences with the current ones</p>



What we proposed

- **Visits** both by the FMS team to the HSP and vice versa, to hold meetings with the teams involved and to generate useful work for both parties.
- **Meetings with the stakeholders** will be held:
 - To align needs, expectations, and involvement in the process
 - By department, and with a multidisciplinary perspective.
 - During this analysis of the organizational capacity, professionals from HSP will help to articulate the processes and the teams involved to conduct them in the SNS-O.
- This project will also include an **organizational stakeholder mobilization**, where a feasibility analysis will be reviewed, as well as a patient journey map in case the process is complex enough.
- This will help to **analyze the viability of PPI implementation process** in the SNS-O, and will also help identify future projects to include in the procurement process in the SNS-O.



+ Benefits – What's in it for us

- **Overcome the barriers to the adoption of innovation procurement in the Helthcare System of Navarra**, through the implementation of innovative processes (organizational or assistance) that integrate multidisciplinary work teams, that are highly efficient, applying methodologies that substantially improve current health activities and technologies.
 - **Benefits for the institution:**
 - The adoption of new working procedures related to PPI, which integrate working groups motivated by the integration of new services or processes that favor the implementation of innovative solutions in the public health sector of Navarra. Always considering to work in a value-based, patient-centered medicine.
 - The implementation of new purchasing processes, which are aligned with market experience, are key to properly manage the implementation of innovative technological solutions.
 - **Benefits for the region (Navarra):**
 - Improve of the competitiveness of the business ecosystem: Generation of new technological solutions: Economics and Human Resources.
 - **Benefits for Sant Pau:**
 - Share points of view from different healthcare stakeholders for jointly developing new PPI models that can be of interest for the hospital.
- All the PPI processes are oriented to have a **real positive impact on patient's health**.
 - New technological solutions are intended to be implemented thorough PPI as far as they cannot be met otherwise.